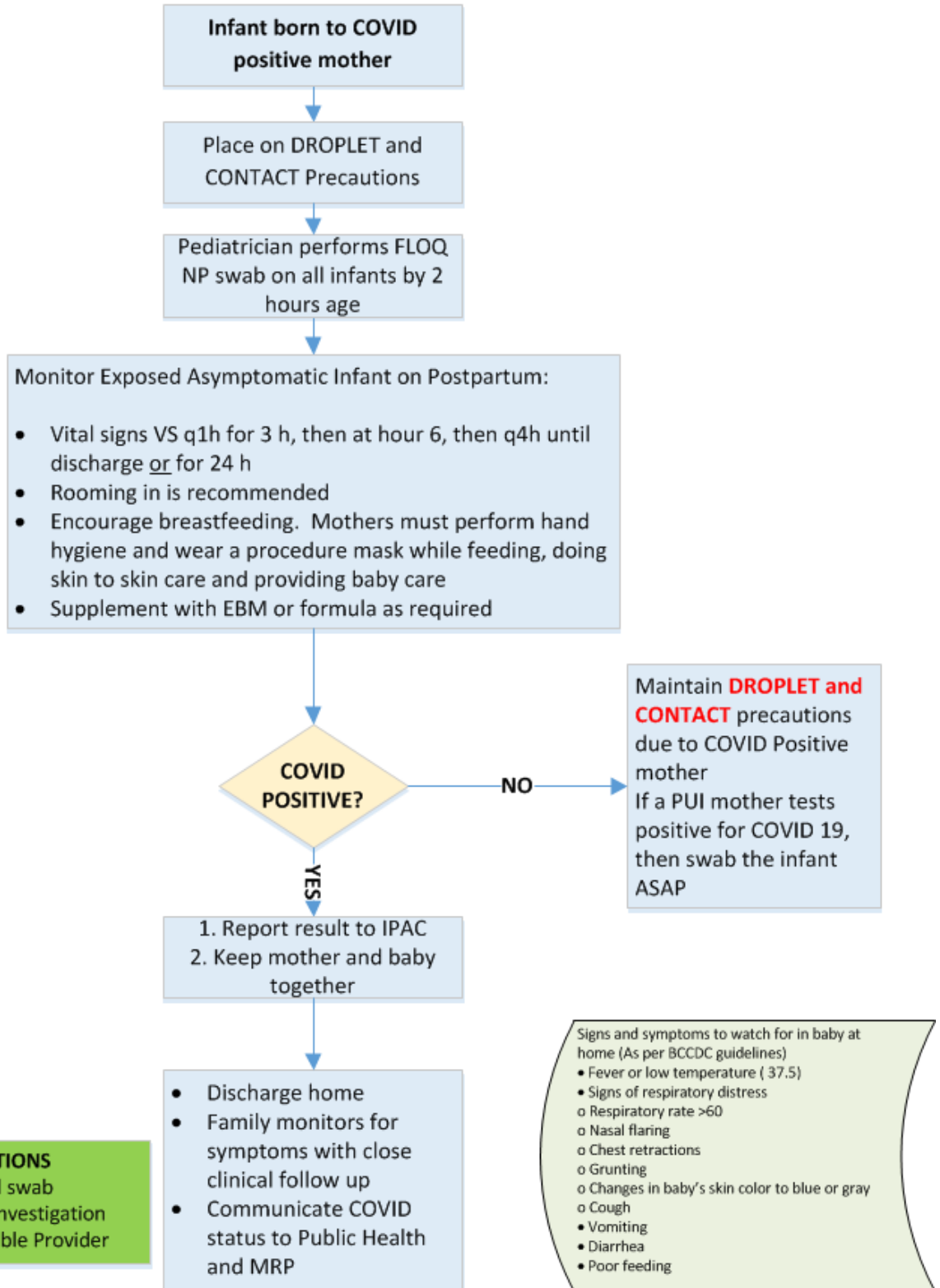


**Site Applicability**

BC Women's Hospital – Maternal Newborn Program

**BC Women's Hospital – CARE FOR THE INFANT OF MOTHERS WHO ARE  
 COVID POSITIVE (\*Updated April 6, 2020)**



**ABBREVIATIONS**  
 NP = Nasopharyngeal swab  
 PUI = Person Under Investigation  
 MRP= Most Responsible Provider

### Version History

DATE	DOCUMENT NUMBER and TITLE	ACTION TAKEN
14-Apr-2020	C-06-01-60609 Care For the Infant of Mothers Who Are COVID-19 Positive	Developed by C&W COVID Response Working Group; Approved by Professional Practice Director

### Disclaimer

This document is intended for use within BC Children's and BC Women's Hospitals only. Any other use or reliance is at your sole risk. The content does not constitute and is not in substitution of professional medical advice. Provincial Health Services Authority (PHSA) assumes no liability arising from use or reliance on this document. This document is protected by copyright and may only be reprinted in whole or in part with the prior written approval of PHSA.