

BCWH– Surgical Patient Screening Call instructions for Covid-19

Details on this document:

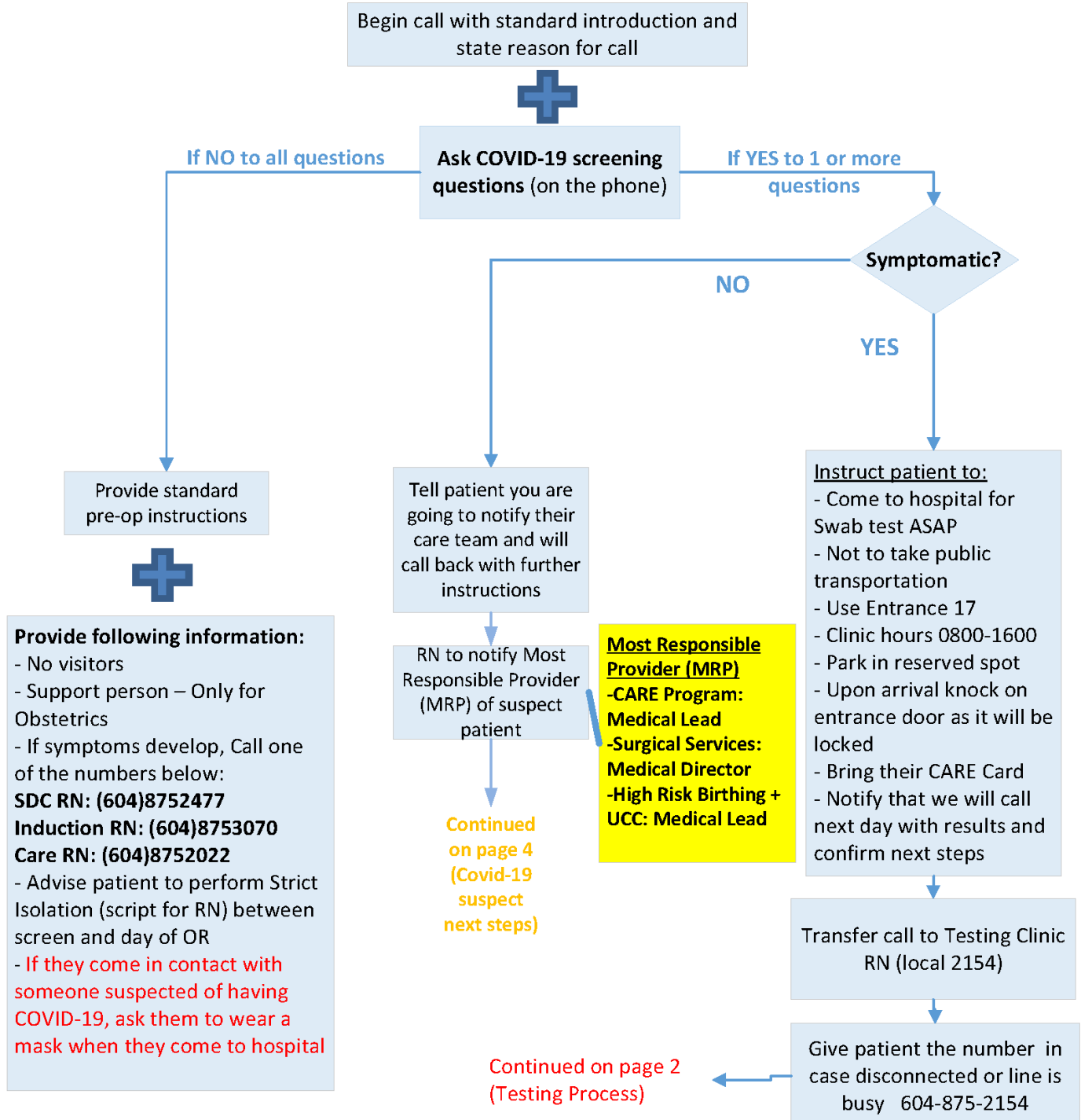
When to use:

- CARE patients to be screened 48 h prior to start of prep (not 48h prior to OR date)
- Gyne urgent OR and Obstetrics patients to be screened 48 hours prior to OR date
- Induction patients to be screened as per program

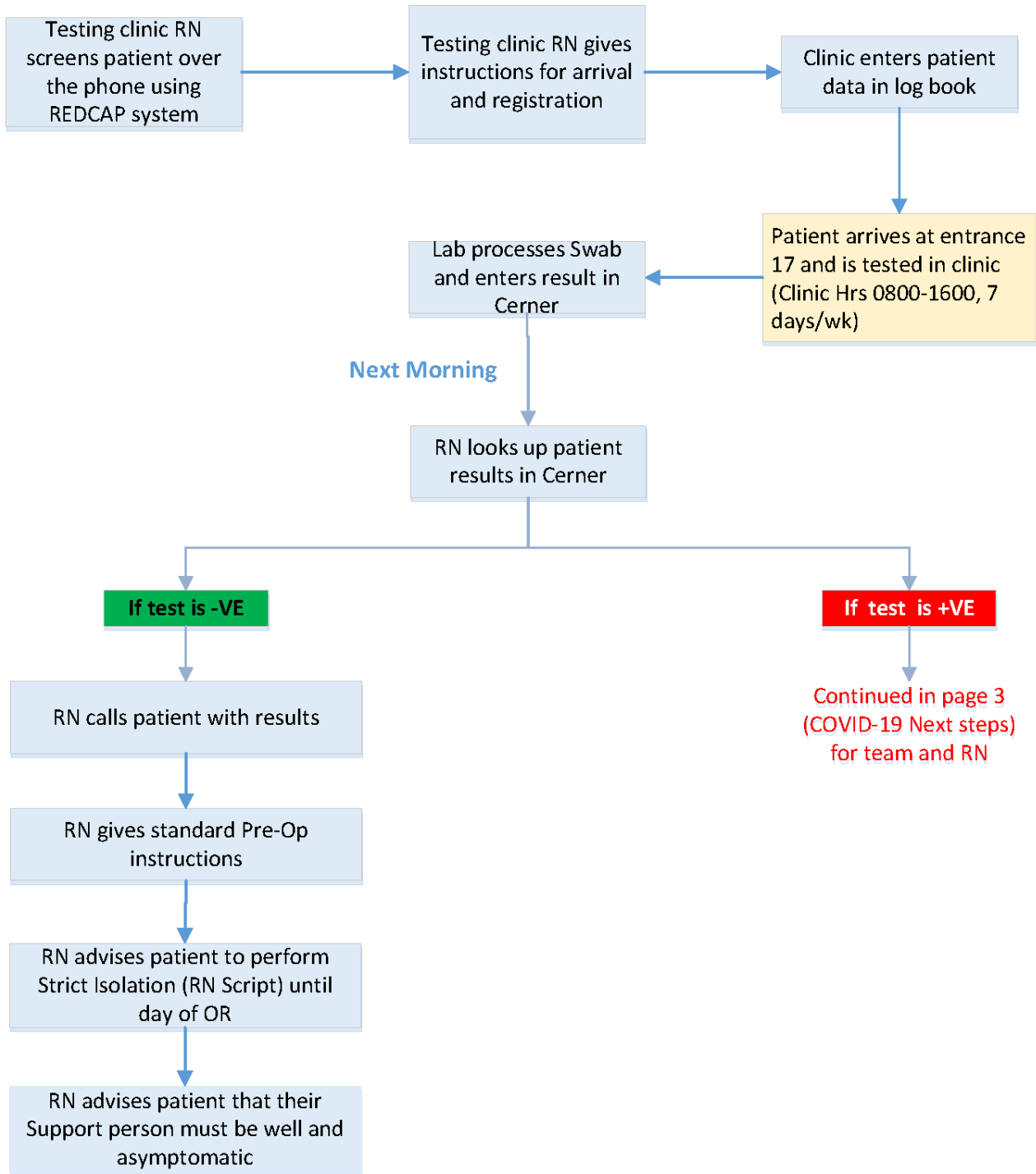
Who to use: SDC RN/Induction RN/Care RN

Where is it: SDC desk/Induction Office/Care Clinic

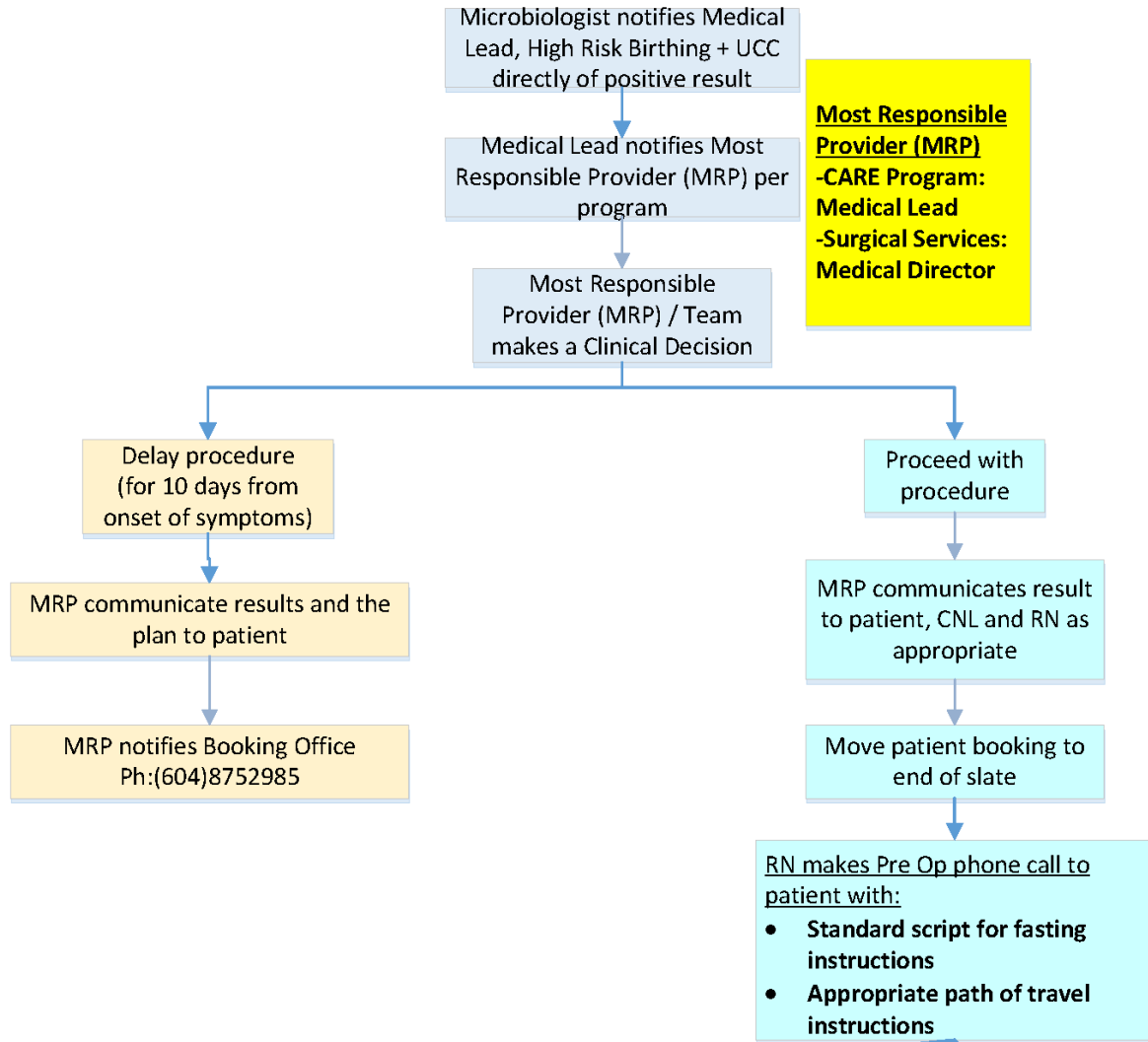
What is it: Instructional script



BCWH – Outpatient - COVID-19 Suspect +ve patient Testing Process



BCWH – Covid +ve Surgical patient – Decision algorithm

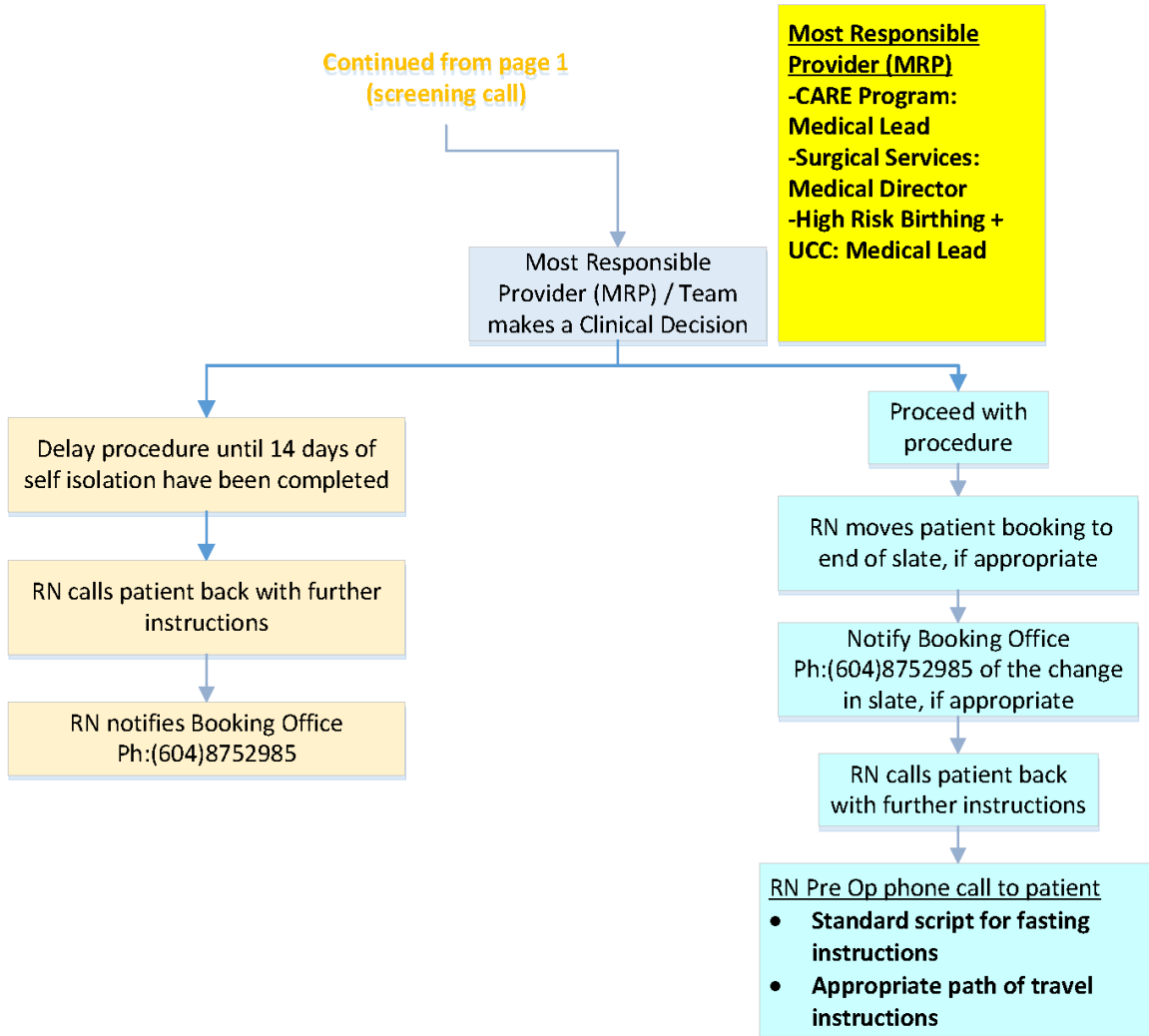


Most Responsible Provider (MRP)
 -CARE Program:
 Medical Lead
 -Surgical Services:
 Medical Director

Instructions to be provided to patients:

<p>GYNE On the day of your procedure: *Upon arrival to Hospital, call (604) 875 5268 * If before 7:00-wait outside Entrance#97, after 7:00 wait outside Entrance #93 *RN will meet you at entrance *support person is not allowed inside hospital</p>	<p>OBS On the day of your procedure: *Upon arrival to Hospital, call 604 875 2000 ext 1975 *Wait outside Entrance#97 door *RN will meet you at entrance 97 *one support person is allowed MUST be ASYMPTOMATIC</p>	<p>CARE On the day of your procedure: *Upon arrival to Hospital, call (604) 875 5268 * If you have no phone, ask security to call for you * If before 7:00-wait outside Entrance#97, after 7:00 wait outside Entrance #93 *RN will meet you at entrance *support person is not allowed inside hospital</p>	<p>INDUCTION OF LABOUR On the day of your procedure: *Upon arrival to Hospital, call 604-875-6260 *Wait outside Entrance#97 door *RN will meet you at entrance 97 *one support person is allowed MUST be ASYMPTOMATIC</p>
--	--	--	---

BCWH – Covid-19 Suspect Surgical patient - Decision algorithm



Instructions to be provided to patients:

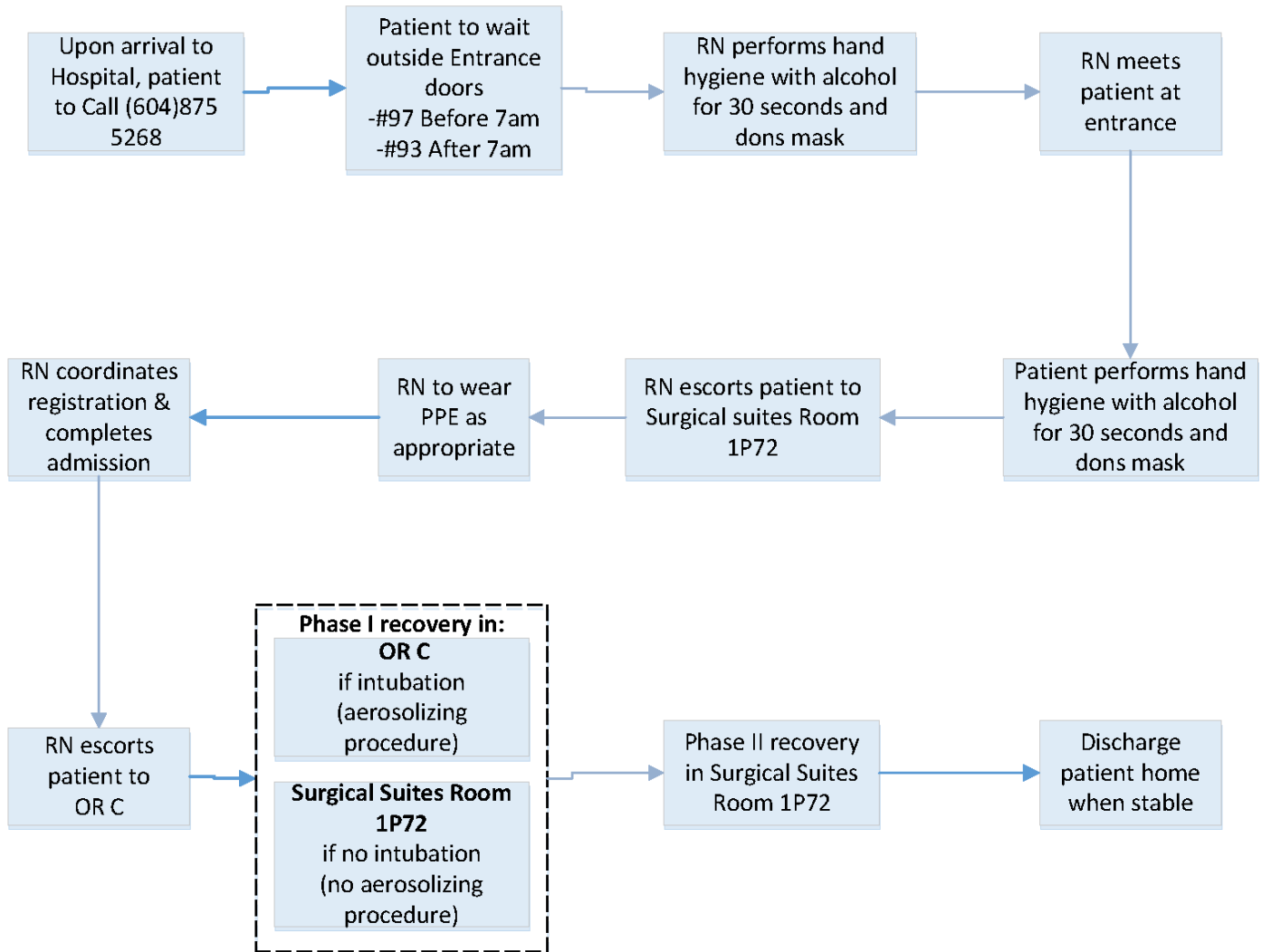
GYNE
On the day of your procedure:
 *Upon arrival to Hospital, call (604) 875 5268
 * If before 7:00-wait outside Entrance#97, after 7:00 wait outside Entrance #93
 *RN will meet you at entrance
 *support person is not allowed inside hospital

OBS
On the day of your procedure:
 *Upon arrival to Hospital, call 604 875 2000 ext 1975
 *Wait outside Entrance#97 door
 *RN will meet you at entrance 97
 *one support person is allowed **MUST be ASYMPTOMATIC**

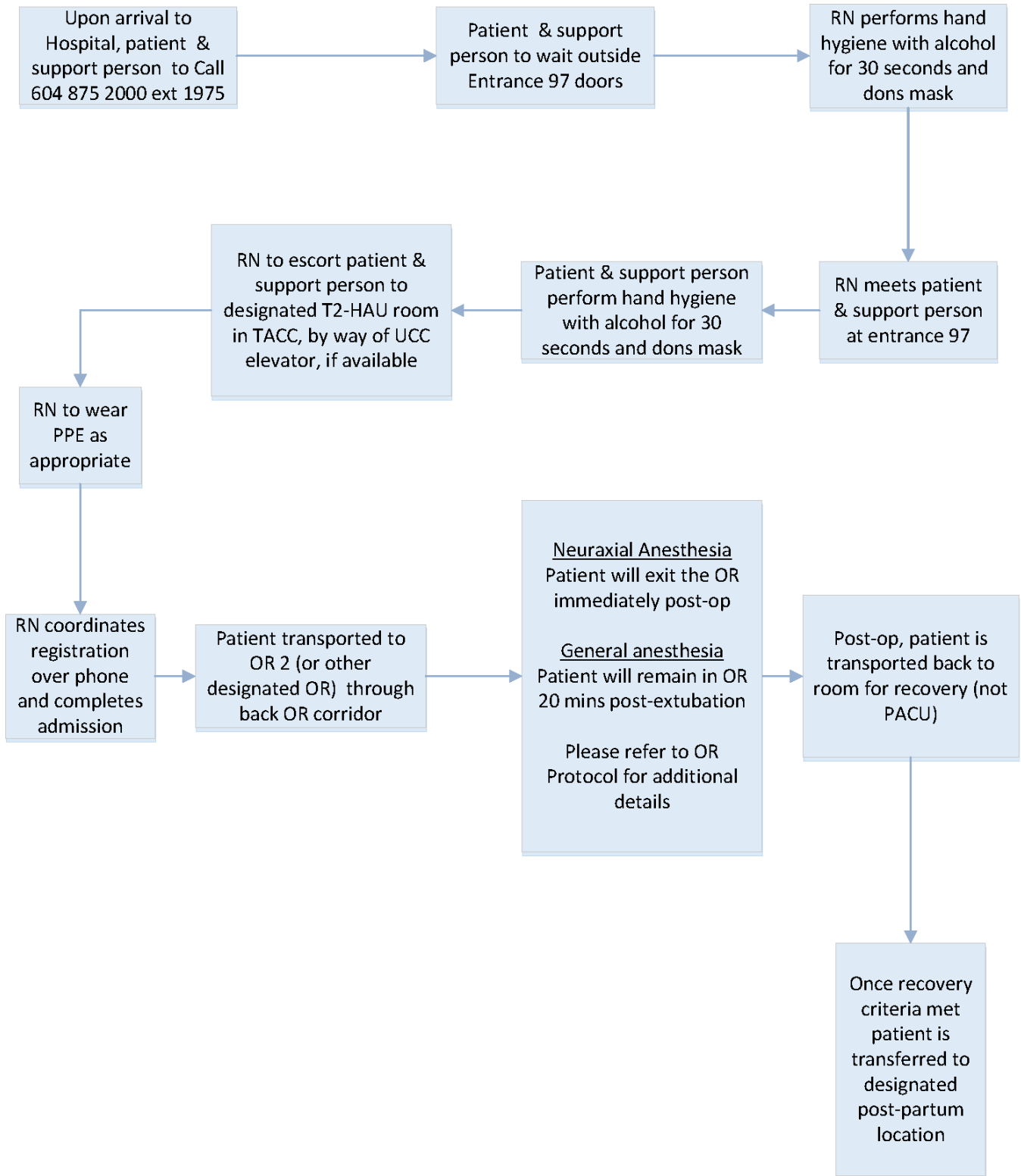
CARE
On the day of your procedure:
 *Upon arrival to Hospital, call (604) 875 5268
 * If before 7:00-wait outside Entrance#97, after 7:00 wait outside Entrance #93
 * If you have no phone, ask staff at entrance to call for you
 *RN will meet you at entrance
 *support person is not allowed inside hospital

INDUCTION OF LABOUR
On the day of your procedure:
 *Upon arrival to Hospital, call 604-875-6260
 *Wait outside Entrance#97 door
 *RN will meet you at entrance 97
 *one support person is allowed **MUST be ASYMPTOMATIC**

BCWH – Pathway for Gyne (Wednesday) /CARE (Friday) Surgical patient (with COVID-19) upon arrival



BCWH – Pathway for Scheduled Obstetrical Surgical patient (with COVID-19) Upon Arrival



Version History

DATE	DOCUMENT NUMBER and TITLE	ACTION TAKEN
04-May-2020	C-06-01-60638 BCWH Surgical Screening Algorithm	Developed by BCW Maternal Newborn Program; Approved by Professional Practice Director
07-May-2020	"	Updated; Approved by Professional Practice Director

Disclaimer

This document is intended for use within BC Children's and BC Women's Hospitals only. Any other use or reliance is at your sole risk. The content does not constitute and is not in substitution of professional medical advice. Provincial Health Services Authority (PHSA) assumes no liability arising from use or reliance on this document. This document is protected by copyright and may only be reprinted in whole or in part as per the Terms of Use on the website.