

Site Applicability

BCW Neonatal Program

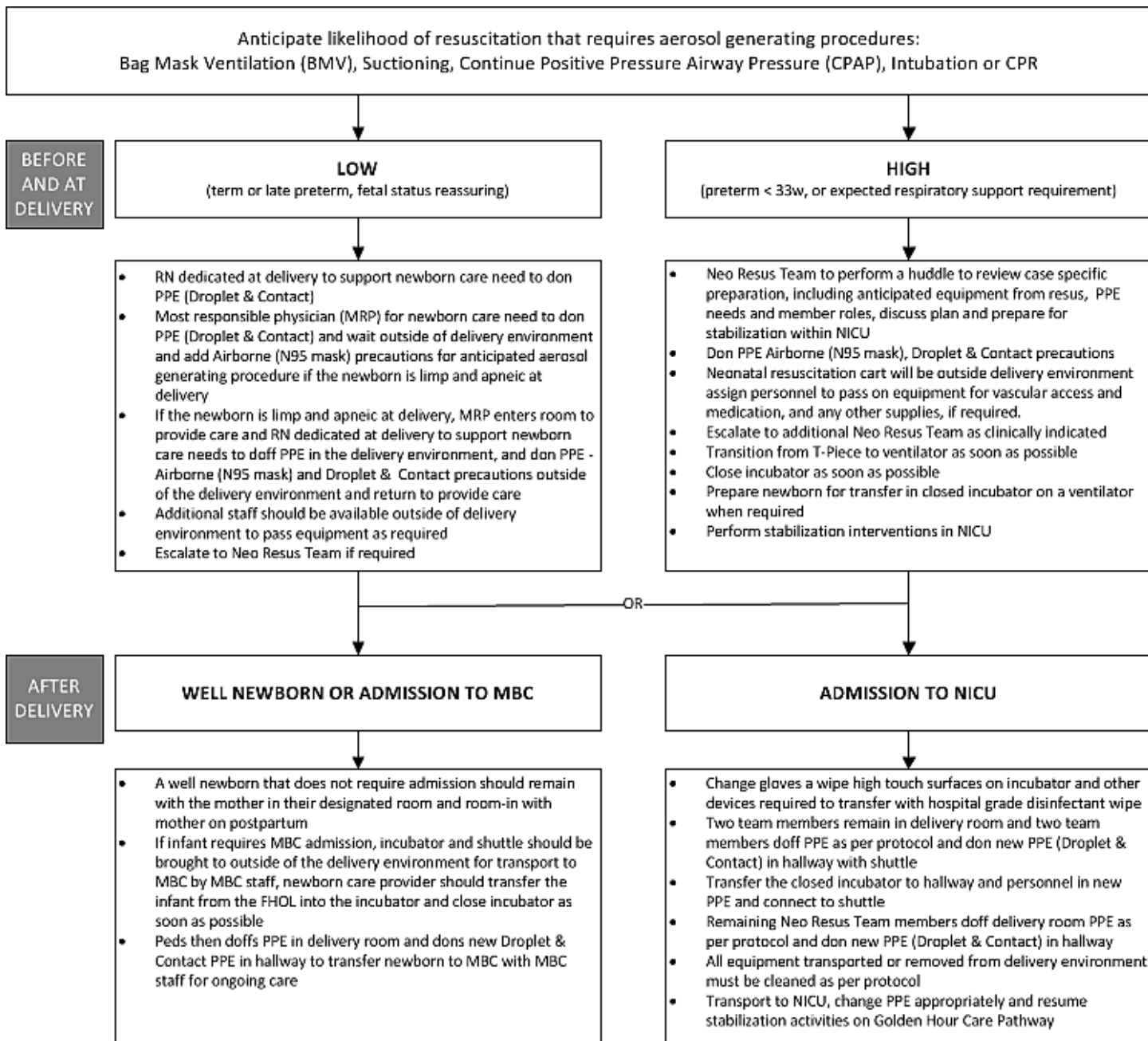
General principles

- Early notification of team responsible for newborn care on maternal where mother is Covid-19 positive or Patient Under Investigation (PUI) admission to ensure attendance of experienced NRP provider at birth
- Minimize the people in the delivery area to only those providing direct care
- Perform equipment check prior to mother entering the delivery area. Commonly used equipment for neonatal resuscitation should be readily available, remove unnecessary equipment and supplies out of room. Keep neonatal resuscitation cart outside room.
- Notify team responsible for newborn care upon transfer of mother to the OR or at start of second stage to ensure there is enough time to don appropriate Personal Protective Equipment (PPE) (Droplet & Contact or Airborne and Droplet & Contact dependant on situation - see below)
- Ensure resuscitation and ventilation equipment HEPA filters to filter expired air.
- Experienced NRP provider in attendance, NRP as per protocol
- Initial steps of NRP to be provided by maternal care provider (warm, dry and stimulate, delayed cord clamping (DDC) unless contraindicated as per DCC guideline)
- If infant to be separated from family, family not to accompany the infant on transfer. Family access to be evaluated in consultation with IPAC.
- Consult IPAC for admissions to MBC or NICU
- Refer to IPAC manual for ongoing care considerations (e.g. family teaching, breastfeeding, hand hygiene, reduced risk of transmission) PPE and isolation precautions and the Management of the infant Confirmed, Patient Under Investigation or Contact with Covid-19 Guideline

NEWBORN DELIVERY MANAGEMENT WHEN MOTHER IS COVID-19 POSITIVE OR PATIENT UNDER INVESTIGATION

DOCUMENT TYPE: ALGORITHM

NEWBORN DELIVERY MANAGEMENT WHEN MOTHER IS COVID-19 POSITIVE OR PUI



References: Accessed Mar 18, 2020

- COVID-19 Working in neonatal settings: <https://www.rcpch.ac.uk/resources/covid-19-guidance-paediatric-services#working-in-neonatal-settings>
- COVID-19 - guidance for paediatric services-RCPCH UK <https://www.rcpch.ac.uk/resources/covid-19-guidance-paediatric-services>
- Intubation and ventilator care for nCoV paediatric patients in PAM, HKWC Jan 2020
- Interim Guidance for Emergency Medical Services (EMS) Systems and 911 Public Safety Answering Points (PSAPs) for COVID-19 in the United States <https://www.cdc.gov/coronavirus/2019-ncov/hcp/guidance-for-ems.htm>

Version History

DATE	DOCUMENT NUMBER and TITLE	ACTION TAKEN
19-Mar-2020	C-06-01-60571 Newborn Delivery Management When Mother Is COVID-19 Positive Or Patient Under Investigation	Developed by BCW Neonatal Programs; Approved by Professional Practice Director

Disclaimer

This document is intended for use within BC Children's and BC Women's Hospitals only. Any other use or reliance is at your sole risk. The content does not constitute and is not in substitution of professional medical advice. Provincial Health Services Authority (PHSA) assumes no liability arising from use or reliance on this document. This document is protected by copyright and may only be reprinted in whole or in part with the prior written approval of PHSA.