

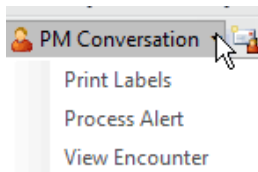
CERNER PROCESS ALERTS AT C&W

May 1, 2023

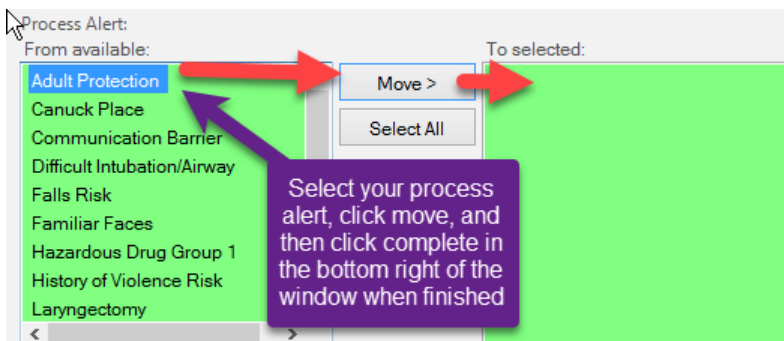
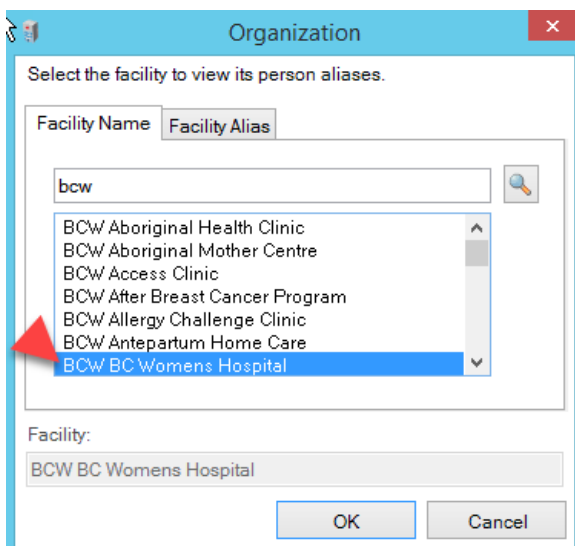
- ▶ Entering and reviewing process alerts in CST Cerner is important to ensure the patient's banner bar communicates special disease, violence or process alerts to those providing care
- ▶ These process alerts should be entered:
 - At cutover of a patient's chart from paper or CW Cerner to CST Cerner
 - During initial assessment and/or admission
 - During a clinic or hospital visit, when new information or situations warrant an update

HOW TO ENTER PROCESS ALERTS IN SYSTEM:

Navigate to the PM Conversation dropdown in your toolbar; select process alert



Select the facility your patient is located in



Common Alerts in System

PATIENT ALERT	Corresponding PROCESS ALERT	What it means:
Canuck Place Care Plan	Canuck Place	This alert indicates that the patient is admitted to Canuck Place Hospice.
Language barrier	Communication barrier	When clinical assessment has found that there is a challenge to communication between the patient and caregivers that could impact their care.
Difficult to intubate	Difficult intubation/airway	This patient has physiological components that limit their airway or could pose challenges during intubation.
Falls Risk	Falls Risk	The patient has been assessed for falls risk and has been found to have an increased risk of falls. This is the same alert for whichever standardized fall risk assessment tool that clinical area uses.
Hazardous drug exposure	Hazardous Drug Group 1	The patient is within the hazardous drug group 1 precautions period after having received a hazardous drug group 1 medication.
History of Violence	History of Violence	Used to indicate to staff when patients have a current or historical risk of violent or aggressive behaviour and that staff caring for said patients be directed to review prior documentation, including care plans.
Care Plan	Special Care Plan	The patient has a care plan in place that spans across care settings.
Seizure Risk	Seizure Precautions	The patient is at risk of having seizure activity and precautions are in place to ensure their safety in the event of a seizure.
Special Diet	Therapeutic Medical Diet	For patients who have an active diagnosis or a chronic problem of Ketogenic Diet, Fructose intolerance, hereditary, and/or Glycogen Storage Disease.
Violence Risk	Violence Risk	The patient has been assessed and has been found to have an increased risk of violence using the standardized too.
Visitor Restrictions	Visitor Restrictions	This alert is to indicate that the patient prefers to restrict visitors at this time. This is used in conjunction with registration functions to communicate visitor restrictions.

What are some additional resources and supports?

- [CST Cerner Help: Add a Process Alert](#)