

So you think you need POCT....

A sneak-peak of the POCT request
and program maintenance at CW

Steps to POC Program Launch:

POCT Application Exploration

Selection/Validation

Implementation

Training/Education

Procedures

SOP
QC practices
PT practices

Handling of Patient Results

Future Training and CE

Program Audits

POC Testing Applications at CW

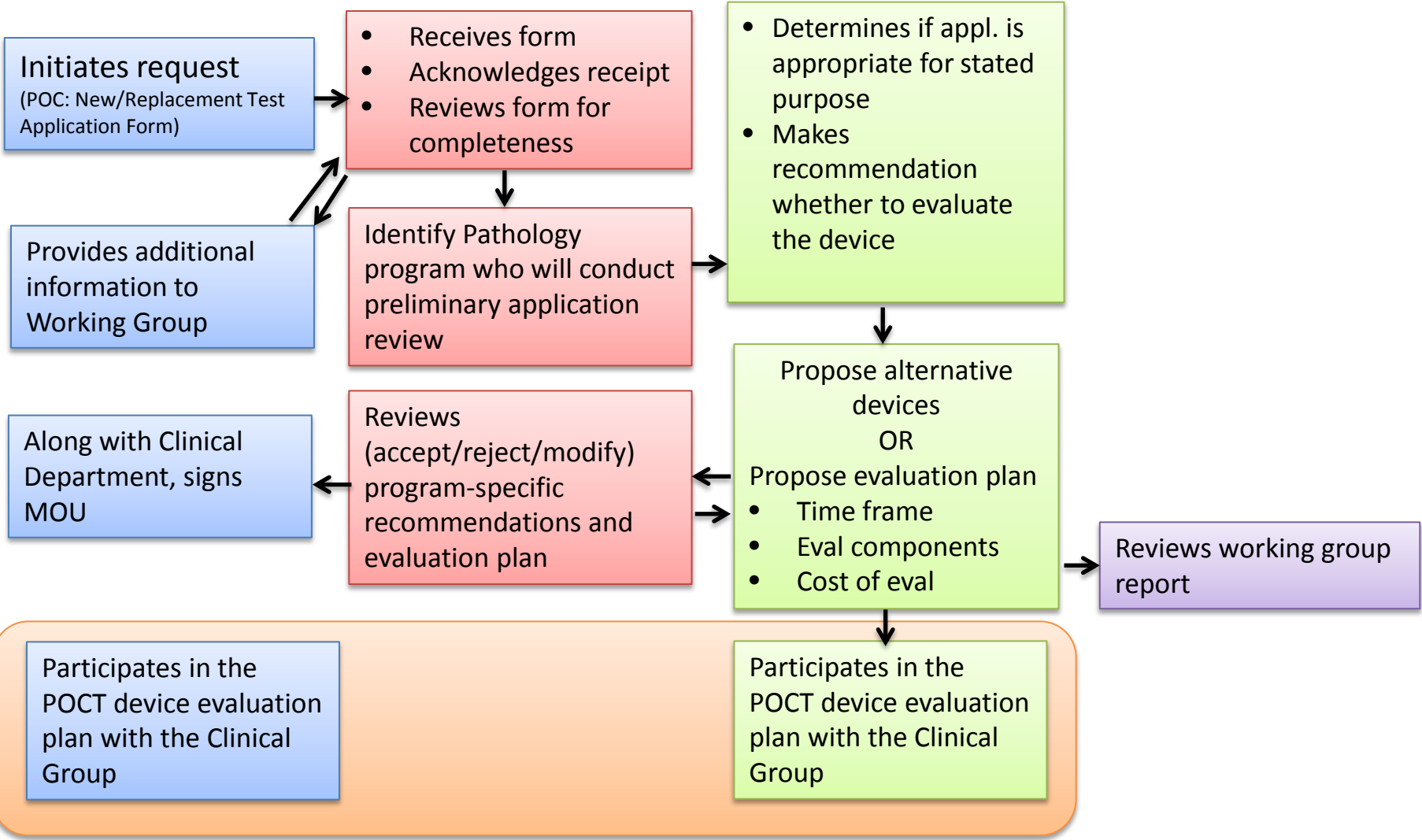
- Formal process to be re-defined in upcoming months
- All requests for new and replacement devices, software or other POC processes will require review by a hospital POC Committee
- An example of what this process might look like

Principal Applicant

Point of Care
Committee Chair/
Working Group

Lab Program
Dept of Pathology

Full Membership
Point of Care
Committee



If evaluation is successful, additional steps are outlined on the next slide



Point of Care (POC): New/Replacement Test Application Form

Point of Care testing is defined as testing performed outside a central lab environment, near or at the patient bed side/site. The C&W Laboratory is responsible for the governance, oversight, operation and quality of all Point of Care Testing at CW. Any request for POCT testing must be evaluated and approved by appropriate Medical and Operations Staff.

Please complete this form as thoroughly as possible and email to: POCTLab@cw.bc.ca
Questions can be directed to: Calvin.Lee@cw.bc.ca; bjung@cw.bc.ca

Principal applicant to complete Sections A through E below.
Grey areas reserved for Pathology Program comment.

Section A: GENERAL INFORMATION

Date	Clinical Area Requesting POCT	
Clinical Area Medical Lead	Email/contact	
Clinical Area Operations Leader or Designate	Email/contact	
End User Representative:		
Relevant Pathology Area:		

Section B: POC TEST REQUEST

Test description:

POCT Device Exploration

Selection/Validation

Implementation Memorandum of understanding
to be completed by clinical
program

Training/Education

Procedures SOP
QC practices
PT practices
Handling of Patient Results

Future Training and CE

Program Audits

These steps will need to be completed by the clinical team in conjunction with POCT laboratory staff.