

Reference Guide

M*Modal Mobile Microphone Application

What is the M*Modal Mobile Microphone Application?

The M*Modal Mobile Microphone application turns your Smart Phone into a wireless microphone, allowing you to dictate using the FESR application without using a wired speech microphone attached to a computer. **NOTE:** You still need to dictate at a computer with the FESR Fluency applications installed.

The Mobile Microphone application can run on both iPhones and Android Smart Phones. Blackberry OS phones cannot be used.

Features

- Allows you to use your Smart Phone as a microphone for FESR instead of a physical microphone attached to your computer.
- Application uses secure data transmission to stream audio from your Smart Phone to the Fluency Direct software running on the computer.
- Uses your existing speech profile.
- The microphone button functionality differs from the regular microphone. There are M1-M4 buttons (similar to the F1-F4 buttons on a regular microphone) which default to M*Modal built in commands and are re-programmable.

Requirements

- You must have a compatible device (iPhone iOS 8 and newer or Android Smartphone OS 4.4 and newer). You can check by doing the following:

iPhone	Android Phone
1. Go to Settings	1. Go to Settings
2. Tap on 'General'	2. Tap on 'About Device'
3. Tap on 'About'	3. Find 'Android Version'
4. Find 'Version'	

- The M*Modal Mobile Microphone App must be paired (one time) with your Fluency Direct user ID.
- When using the App within the Health Authority, you should ensure your device is connected to the Staff Wi-Fi and not the Guest Wi-Fi for optimum performance.
- You must download the **“M*Modal Mobile Microphone Application”** from either the Apple App Store or the Google Play Store.

Support


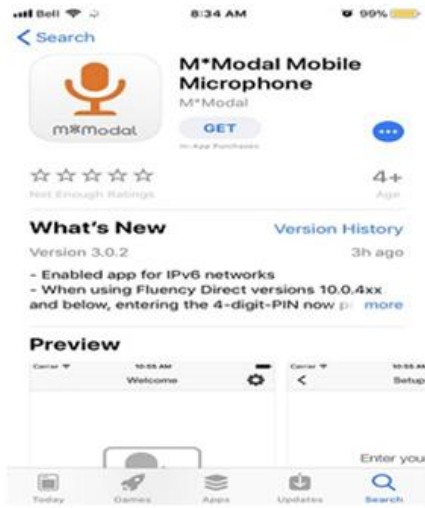


If you need assistance, please contact HIM Transcription Services at Transcriptionalerts2@vch.ca or call 604-806-9696. This guide can also be found online at: <http://www.himconnect.ca/fesr>.

Troubleshooting Tips

- If you are unable to connect your account to the mobile microphone application, please ensure that you are on the Wi-Fi network or mobile data.
- If you are changing working environments and/or having voice recognition issues, please re-calibrate your microphone in your new work environment.


Instructions

1. Connect to Wi-Fi or ensure mobile data is turned on. ****Please note**, downloading the application when using mobile data may result in higher data usage.

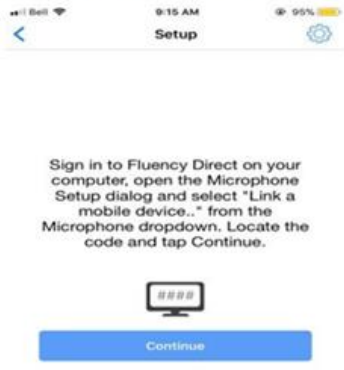
<p>FOR IPHONE:</p> <ol style="list-style-type: none"> 2. App Download In the App Store:  <p>Search for 'M*Modal Mobile Microphoné'.</p> <ol style="list-style-type: none"> 3. Once you have downloaded the Application open Fluency Direct on your computer 	<p>FOR ANDROID:</p> <ol style="list-style-type: none"> 2. App Download: In the Play Store:  <p>Search for 'M*Modal Mobile Microphone'.</p> <ol style="list-style-type: none"> 3. Once you have downloaded the Application open Fluency Direct on your computer. 
--	---

Note: Instructions below are applicable to **BOTH** iPhone and Android

4. **Getting Started:** Once the app is downloaded and opened, you should see this screen:



5. Tap on 'Get Started' and you will be asked to sign in to Fluency Direct on your computer.



6. **PIN and Setup:** On your computer, login to Fluency Direct. Once signed into Fluency Direct (A) – click on the Fluency Direct pill and go to Microphone Setup (B) → From the Microphone drop down menu → Select Link a mobile device (C).

A.



B.



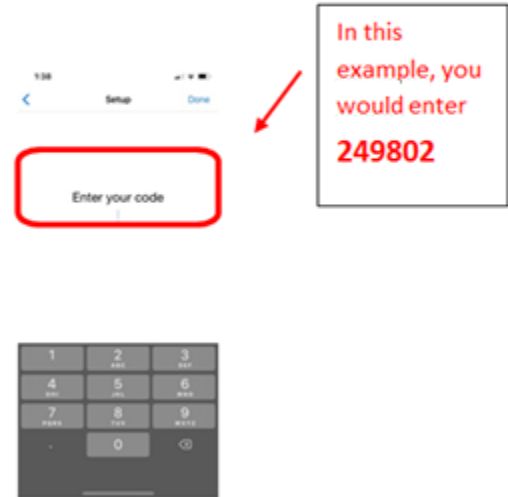
C.



7. A six digit pin will appear on your computer screen.

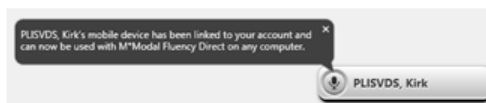


8. Tap Continue on your mobile device and enter the PIN into your iPhone/Android device.



9. Once you entered the code, your screen will bring up a microphone icon with instructions to record. A little green check mark should appear during the linking process. You only need to link your device once to your account.

10. To ensure you are connected to your device on Fluency Direct on the desktop, this message should appear above the Fluency Direct icon:



11. Press on the icon to record. The icon turns **green when recording**.
See Step 13 to specify how the record button functions.



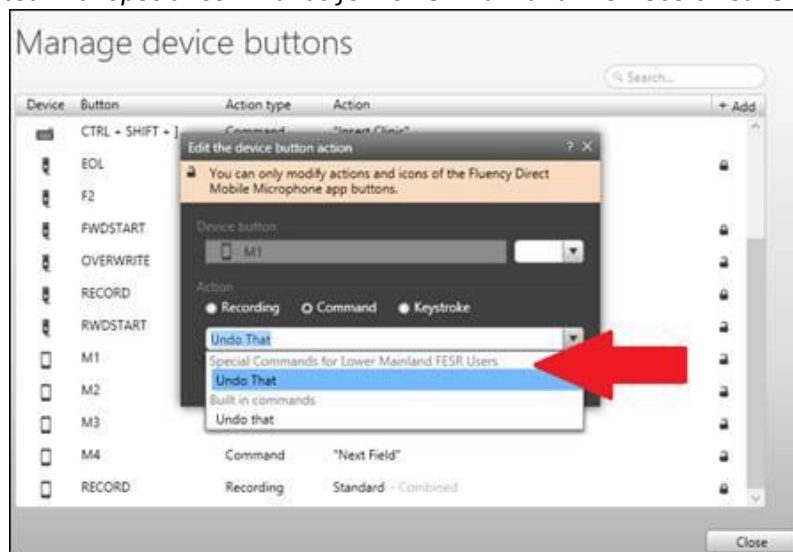
12. Your mobile microphone app will display 4 programmable function buttons at the bottom of the screen:



If you want to use the button functionality, the 4 buttons are initially set to default functions (similar to the F1-F4 buttons on a tethered microphone). As described below, M1 and M4 are set to default settings:

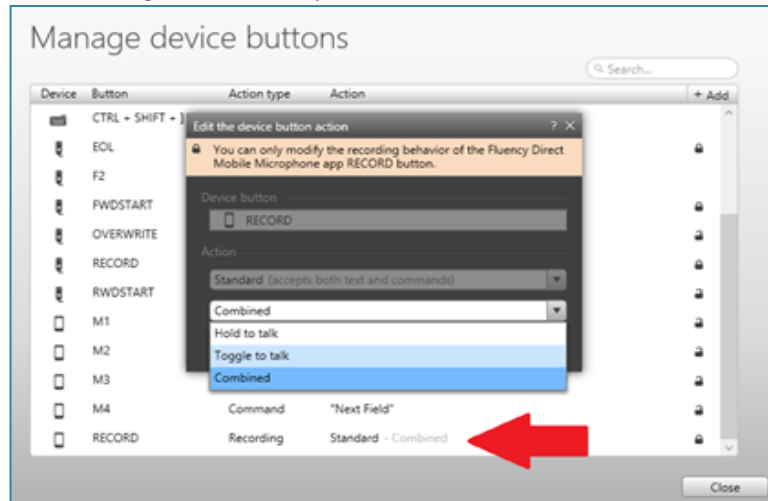
- M1: Undo That – Defaults to M*Modal built in command – Requires re-configuration for Cerner CST sites to custom “Undo that” command (see instructions below).
- M2: Open Speech Box/Transfer Text (command) – no configuration required.
- M3: Command Only (recording mode) – no configuration required.
- M4: Next Field – Defaults to M*Modal built in command – Requires re-configuration for Cerner CST sites to custom “Next Field” command (same process as described below).

To re-configure these functions, click ‘device button mappings’ from the Fluency Direct pill. If you want to re-configure the M1 button, for example, select ‘M1’ from the list, double click to edit. Select the ‘Undo that’ command associated with *Special Commands for Lower Mainland FESR Users*. Save and Close.



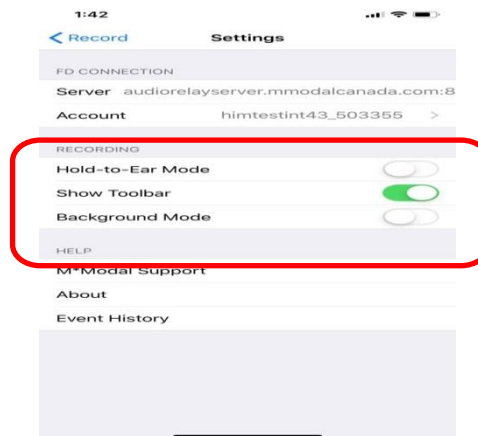
13. Record button functionality (*toggle to talk/hold to talk/Combined*) is available in ‘Device button mappings’ on the Fluency Direct pill:

The default is set to “Hold” which means press and hold the record button while dictating. Release the button when finished. The “Toggle” option allows you to press the button once to record and then press again to stop the recording. Combined option allows both actions.

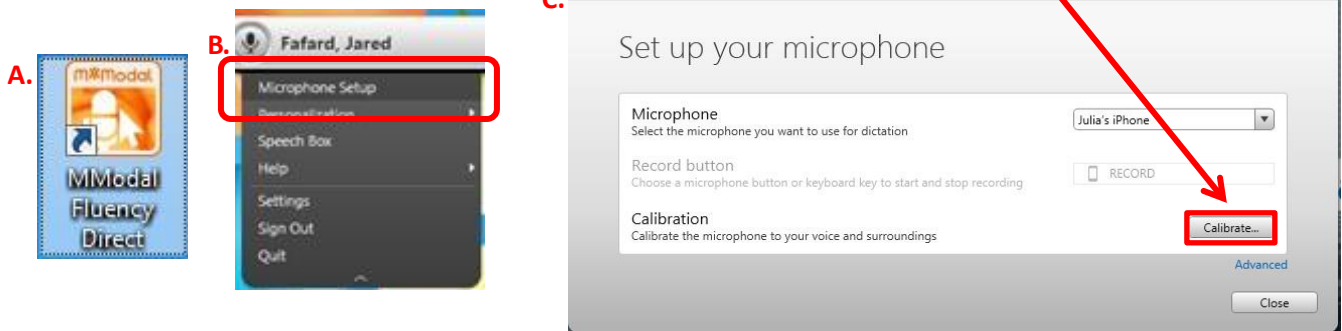


14. Configuration Settings do not need to be changed but are available on top right hand corner on the mobile device:

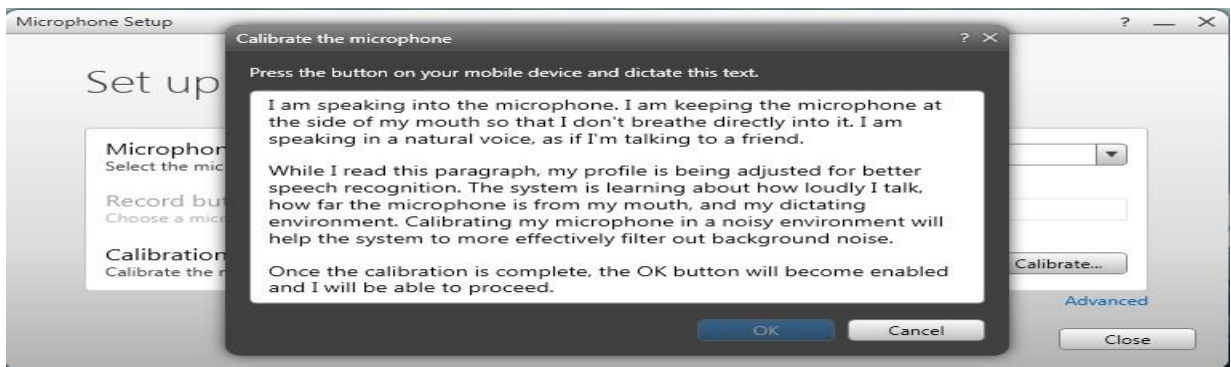
Note: ‘Hold-to-Ear Mode’ When this feature is on, the microphone will turn on when the device is held to the ear and turn off when taken away.



15. Calibration of the mobile microphone is required to ensure accurate voice recognition. This step should be done after connecting your mobile device. If voice recognition is still an ongoing issue, please re-calibrate the mobile microphone.
- After logging into Fluency Direct on your computer (A), click on the Fluency Direct pill → Microphone Setup (B) → Calibrate (C). Shown below:

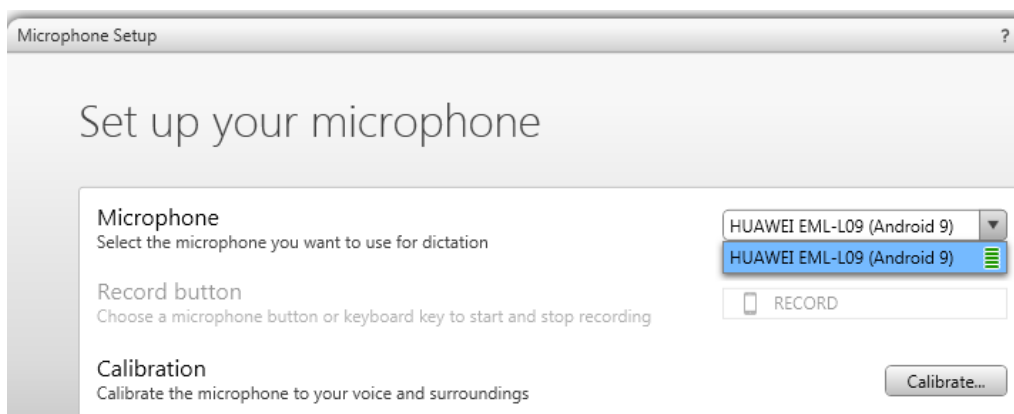


- b. Tap or hold the mobile devices' microphone button and dictate the text on the computer screen. Then click on 'OK' to calibrate.



16. The next time you log on to Fluency Direct and open your app on your device, you will notice that the system will have saved your phone according to your personalized mobile **Device Name**. For example, instead of "link a mobile device" it will state your device name under the dropdown list. Select whichever microphone you will be using to dictate.

e.g.: In this example the user's phone is titled HUAWEI EML-L09 (Android 9).



17. To unlink your mobile phone: In the settings menu, select 'Account'. On the next screen, you will see a red bar that says '**Unlink This Account**' – tap this and start the process again from the beginning to link to your device. You may choose to do this in order to link this device to another user.

